

We need **donations for this year's tombola event** at the Party in the Park event.

If you can drop off your donations to **Marian Day 4 Keighley Rd Laneshaw Bridge BB8 7HU**.

This helps raise money for the village events.



Report Highway Issues to LCC

Please report it to LCC on
lovecleanstreets.lancashire.gov.uk



The responsibility of maintaining the Highways is LCC and they pay more attention to the issues reported on the app or web as they are logged. The Parish Council has reported a number of issues to LCC using the app, and the majority of the issues have been resolved, as LCC also issues a notification when the job is completed.

Volunteers

All the events that the Parish Council organise need volunteers, for us to meet the Health and Safety requirements. The Parish Council appreciate the help that we receive, if you can spare an hour or two to help with the events, please contact the village coordinator. g.meloy@laneshawbridge-pc.gov.uk

Keep up touch. Search for
Laneshaw Bridge Parish Council



www.laneshawbridge-pc.gov.uk



Village In Bloom

Work continues completing the work that was identified during the village clean up walk about. From the clean up walk **the following areas had been identified for attention.**

- Clear the banking next to the Emmott Arms of weeds and brambles. This will enable the In Bloom Group to plant flowers to improve the aesthetics of the village.
- Trim the bushes around the War Memorial.
- Clear the footpath from Monkroyd heading towards Cowling.
- Improve the visual aesthetics when entering Laneshaw Bridge from Cowling. Cut back the vegetation by the side of the road.
- Clear all the vegetation and cut back the tress on the ingress at Monkroyd.



The In Bloom Group meet on Sundays at 12.00 out side the War Memorial



LANESHAU
BRIDGE
PARISH COUNCIL

IN THIS
ISSUE:

Village Planters | 2025 Party in the Park

The Duck Race

Many thanks to the volunteers and children that helped with the duck race.

- **Adult winner Claire Smith duck No 40.**
- **Children winner Emma Hacking duck no 100.**

This year's duck race proved to be a challenge due to the lack of rain and the current of water poor. When the duck was released from under the bridge at Carriers Row the current was stronger from the tributary and wind just pushed the ducks backwards. Also, further down the eddies captured many ducks. Thanks to the volunteers that braved the water to help push the ducks along to the finish.



Ducks needing help with making it to the finish due to the lack of rain.

This year we lost 18 ducks that got caught up in the debris along the banks.

Thanks to all that purchased the ducks.



Village Planters

The uptake on the planters has been positive, there are still a few remaining, if you want to sponsor one or dedicate the planter to a relative in memorial.



The cost is £170 for the first year. This includes the cost of the planter and flowers that will be replenished twice a year. The subsequent cost is £75.



The planters will be located along Keighley Road.

If you would like a planter, please contact g.meloy@laneshawbridge-pc.gov.uk



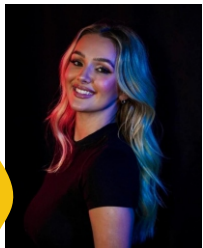
LANESHAW BRIDGE RECREATIONAL GROUND

This year's Party in the Park spectacular event is on Saturday, **14th June** in the village rec. The event was a success last year and the Parish Council hopes to improve on last year. There will be food, tea, and coffee available. We have arranged an exciting array of local talent for the entertainment for this year's event.

The event starts at 2pm and live entertainment from 3 -8pm. The feedback from last year's event was that residents preferred the event to be held in the late afternoon and early evening. Therefore, the times have been changed to accommodate this.

Bands/ Entertainment

- **Giz Byrne**
- **Ally & Joe**
- **Sean Tom**
- **Claudia Thompson**
- **The Independence**



FREE entry

Bring your own alcohol. Please take your rubbish home with you,

**FAMILY FUN | ICE CREAM | STALLS
PARISH COUNCIL FRUIT MACHINE
TOMBOLA | INFLATABLES**

